

Tier One
School-Wide
Positive Behavior Support

2010-2011

Liberty Bell Elementary

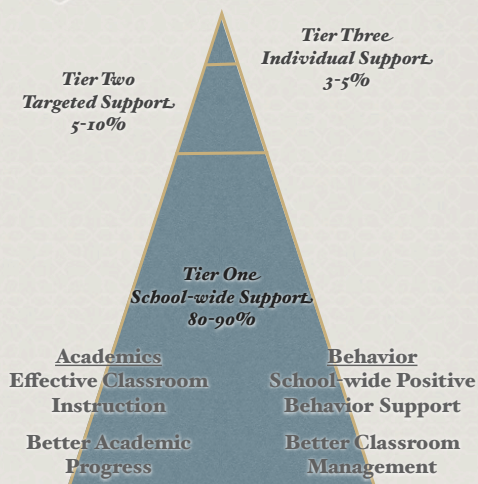
Southern Lehigh School District

960 West Oxford Street, Coopersburg, PA 18036

What is SWPBS?

School-Wide Positive Behavior Support

- *An instructional approach to define, teach, recognize, correct, review, and monitor expected behavior.*
- *Based on the belief that appropriate behaviors can be taught just like academics in a school environment.*
- *Behavior support system is divided into 3 tiers: individual, targeted groups, school-wide*



Traditional School Environment

- 1. Discipline strategies vary among staff.*
- 2. Behavior is controlled.*
- 3. School safety is based on reacting to only bad behaviors.*

SWPBS School Environment

- 1. Positive Reinforcement strategies allow staff to be consistent.*
- 2. Behavior is taught.*
- 3. School safety is based on preventing bad behaviors.*

Implementing SWPBS at Liberty Bell Elementary School

- ✿ *2010-2011 kicks off the first year to proactively use SWPBS at Liberty Bell*
- ✿ *LB program begins with Tier One: School-wide*
- ✿ *7 components support the success of SWPBS*





1. Commitment to PBS

School leaders will actively support, implement, and maintain a School-Wide Positive Behavior Support system.

- ✿ *SWPBS team commits to a 3 year implementation plan for the 3 tier support system.*
- ✿ *SWPBS team attends ongoing professional training and is led by the school's principal.*
- ✿ *The principal forms a core team of faculty representatives such as grade level teachers, specialized support staff, as well as a parent representative to meet on a monthly schedule.*
- ✿ *The SWPBS team actively communicates team efforts, the SWPBS process, and data to families on a quarterly basis.*



2. Universal Expectations

Universal Expectations will be adopted
school-wide for students, staff, and families
to remember and follow.

- ✿ *SWPBS team agrees to 4 positively stated expectations using the acronym L.I.O.N.*
- ✿ *Expectations are defined and strategically placed in specific locations and classrooms to provide a common language of rules.*
- ✿ *Expectations are visible throughout the entire school to promote a culture of fairness and consistency.*

Liberty Bell Expectations

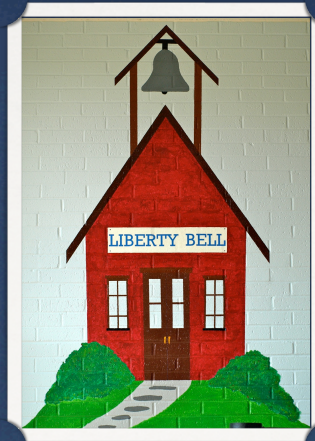
- L. Listen to and follow adult directions.*
- I. Inside voices and manners are used.*
- O. Objects, hands, and feet are kept to myself.*
- N. Nice words and actions are used to show respect.*



3. Social Skill Instruction

Social Skill Instruction
will be taught to all students
by explaining, modeling, and practicing.

- ✿ *SWPBS team develops lesson plans for entire faculty to teach all students on a consistent basis. Social skill lesson plans are taught just like academics.*
- ✿ *Staff defines the expectation, provides the student with examples of the appropriate behavior and inappropriate behavior, and practices the skill throughout the school day.*
- ✿ *Social skills are taught in all areas of the school.*
Bathroom, Bus, Cafeteria, Classroom, Hallway, Playground, Special Events
- ✿ *Students begin their instruction the first week of school with a fun activity called Liberty Bell's Passport to Learning.*



4. Acknowledgement System

Appropriate behaviors when modeled by students, staff, and families will be acknowledged and reinforced on an ongoing basis.

- ✿ *SWPBS team creates an acknowledgement system called Pride of Liberty Bell to foster a positive school environment.*
- ✿ *Pride of Liberty Bell utilizes verbal praise, public posting, and motivators to focus attention on successful student behavior.*
- ✿ *Pride of Liberty Bell acknowledges students daily, weekly/monthly, and quarterly to reinforce school-wide expectations and rules.*

THE PRIDE OF LIBERTY BELL

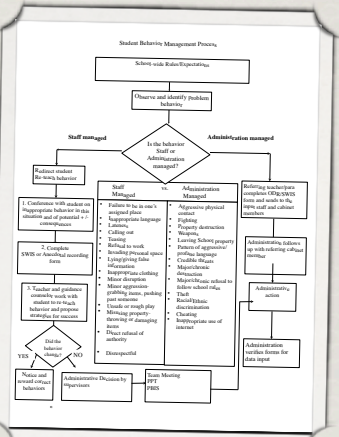
- ✿ *Immediate Recognition (Daily)*
 - ✿ *Pride of Liberty Bell Tickets*
 - ✿ *C.A.T Coupons*
 - ✿ *Phone Call/Postcard Home*
 - ✿ *Celebrity Book*
- ✿ *Intermittent Recognition (Weekly/Monthly)*
 - ✿ *Pride of Liberty Matrix*
 - ✿ *Pride of Liberty Bell Number*
 - ✿ *Mystery Motivators*
- ✿ *Long Range Recognition (Quarterly)*
 - ✿ *School-wide Behavior Celebrations*



5. Office Discipline Referral Procedures

Problem behaviors will be
clearly defined, proactively addressed and corrected, and
monitored on a consistent basis.

- SWPBS team develops an Office Discipline Referral system for dealing with problem behaviors.
- Consequences are developed and instructionally based to take corrective action when students are misbehaving at school.
- Staff tracks problem behaviors with an Office Discipline Referral form.
- Office Discipline Referral forms allow staff consistency in naming the behavior, defining the behavior as a staff or office managed problem, and tracking the student's progress over time.





6. Data-Based Decision Making

Data will be collected, analyzed, and used to guide decisions to obtain a clear understanding of the dynamics driving student behavior.

- ✿ *SWPBS team makes proactive decisions based on the effectiveness of the Pride of Liberty Bell program.*
- ✿ *SWPBS team implements targeted interventions to support identified areas of concern in the school and students who may need individualized support.*
- ✿ *Data is registered on a data collection system called SWIS. Office discipline referral forms and attendance records will be recorded on SWIS daily.*
- ✿ *School-wide data is shared by the principal with staff monthly at faculty meetings and quarterly to parents in the school newsletter.*



7. School-wide Collaboration

Educators and parents can encourage youth to develop the positive behavior skills that are the foundations for a successful future.

How can you get involved?

- ✿ *Ask your child about the Liberty Bell L.I.O.N. expectations. Help them understand what each letter stands for and how the behavior can be used at school, home or in the community.*
- ✿ *Praise your child for earning Pride of Liberty Bell tickets and rewards at school.*
- ✿ *Read the monthly newsletter, Liberty Bell Inquirer or check the website, www.slsd.org to find out information regarding school programs.*
- ✿ *If you have any questions, please do not hesitate to contact the school at (610) 282-1850.*



Liberty Bell Elementary School...

"A place of learning, sharing, and caring with one another."